

Reopening Paterson School District 2020-2021



July 2020 Version 1

Paterson School District
This plan can change due to health
department standards or Gov. Inslee's
Declarations



Respecting Tradition; Shaping Futures

Important Steps in a Safe Reopening

Paterson School District #50 is a K-8 School District serving a large unincorporated portion of south-central Washington state. The current K-8 enrollment is 124 students. The projected enrollment for 2020-2021 is 134 students.

Our Mission:

- To serve Paterson children by building an uncommon school where students partake of a rigorous, extended-day academic program that gives them the means to succeed in school and life, no matter their background or circumstance.
- To shape an intimate, supportive, engaging school community where classes are small and personalized; where parents are partners; where teachers teach with passion and commitment; and where all the adults model—and all the students develop and live—the values of caring, courage, justice, respect, and responsibility.
- To generate for students a transformative experience at an age when they are forging their very identities and lifetime aspirations and to cultivate in them the belief that they shape their own destinies: each one worthy of greatness and goodness, each one capable of—and responsible for—serving the community and the world around them.

Goals for the 2020-21 school year

- ✓ Make the learning experience exceptional for all Paterson students, families, and staff.
- ✓ Move all Paterson students forward *a minimum* of one year in learning during this COVID19 hybrid year.
- ✓ Build a plan that provides flexibility, adaptability and options for our students, families, and staff.
- ✓ Keep our students, families, and staff and community safe and healthy.

Objective: Establish an exceptional learning experience for all Paterson School students using the best aspects of today's educational technology merged with the time-tested best practices of yesterday to develop a modern 21st Century hybrid learning model in our school setting.

We will:

- be courageous in our thinking -- beyond the norm-- and acting -- beyond the norm Paterson will offer traditional face to face learning coupled with live stream or videoed lessons for students who are unable to attend in person.
- prioritize human interaction and personal relationships. Every child, every family, and every staff member will know they are important to our school.
- utilize today's technology to remove barriers and create effectiveness.
- reduce redundancies and inefficiencies in teaching and learning wherever possible.
- prioritize and keep the best aspects of our traditional instructional model as well as the best aspects of the lessons we learned during the closure.
- raise the level of expectations for students. We will ask them to be deep thinkers and to take a stronger sense of ownership in their learning.
- maximize the time spent on the most important aspects of the learning process.

Table of Context

Student Support for Educational Justice:

- OSPI and Paterson School Statements.....4

Listening to Local Voice

- Family and Students..... 5
- Teachers..... 5
- Bus Drivers..... 5
- Maintenance and Custodial..... 5
- Food Services..... 5
- Technology..... 5
- Health Care..... 5
- Office Staff 5

Professional Development for Teachers:

- Standards Based Grading and Grading Policies.....7
- Learning Standards through Thematic Units and Project Based Learning7
- Quality Distance Learning7

Working with OSPI and the Department of Health:

- Staff and Student Screening Plans.....8
- Hand Washing and Hygiene.....8
- School Cleaning8
- Facilities Preparations9
- High Risk Employees and Students9
- Reducing Transmissions9

Paterson COVID Capacity:

- Bussing.....10
- Classroom Configuration.....10
- Additional Space Configuration14

School Operations:

- Hybrid Model15
- Student Schedules16
- Student Attendance16
- Learning Standards and Grading Policy 16
- Curriculum and Technology17
- Special Populations17
- PPE for Staff and Students.....18
- High Risk Contact Considerations 18
- More Transportation Considerations 18
- Food Service Considerations 19
- School Year Calendar.....19
- School Finances.....19
- Communication Plan19
- **Appendices:**
- A—Cleaning Procedure.....20
- B School Calendar23

Support for Education Justice

This work needs to be in community

Paterson School District, like OSPI, believes that every student, family, educator, and community offer strengths and cultural knowledge that are mutually beneficial. We believe that if we are to dismantle systematic racism, we must work as a community, side-by-side in the classrooms. “The work of Washington public schools is to prepare students for postsecondary pathways, careers, and civic engagement. Washington must create the conditions for each student to be educated in racially literate, culturally sustaining, positive, and predictable environments that intentionally prioritize the instruction and development of social-emotional skills, and mental health in addition to our primary focus on academic content.” (OSPI Reopening Washington Schools 2020 District Planning Guide)

In order for Paterson School to authentically serve the population of students who attend our district, it is imperative for us to work with them in our building. For many, this is the place where they are safe, fed, and secure. For many, Paterson is the place where they are introduced to deep thinking and asked to challenge what they know. For many, Paterson is the place to learn a second language, whether that be Spanish or English. For many Paterson is a second home. Our students need the positive and predictable culture of love and acceptance that Paterson provides.

It is our intent to reopen Paterson School with in person instruction and learning this fall. We believe that it is the most equitable and just decision for our community.

Family and Student Voices

Paterson surveyed families and had a 75% response rate. The following information was gathered:

1. Of those responding, the families overwhelmingly reported (92%) their physical and emotional well-being during distance learning was fine.
2. 19% of the families agreed that their children were learning well via distance learning. 6% of the families disagreed with the statement and the remaining 75% were neutral on the topic – many stating they were unsure.
3. The overwhelming response to reopening the school in the fall was positive, only 1% disagree with the re-opening of school in the fall.
4. Most families, 97% agree or strongly agree that face to face learning is best for their children. 3% disagreed with the statement, but said they prefer their children come to school.
5. The wearing of masks on the bus and at school (part of the day) was a mixed bag of results. Some families, 62% agree or strongly agree, 19% of the families were neutral, and some, 19% strongly disagree with the idea of wearing masks.
6. There is great concern about people, both staff and students, coming to school sick.
7. The overwhelming majority (96%) had concerns about staff or students coming to school sick.
8. The overwhelming majority (96%) of families reported to have a plan to keep their children home when they are sick.
9. Comments include: “We cannot run from this virus forever.” “I appreciate the survey and getting to express how I feel.” “I strongly support opening school in the fall and am fine with modifications like masks and social distancing if that is what it takes.” “I do believe we need to return to school in the fall.” “I would be fine with masks on the bus but not in the classrooms all day.” “COVID don’t scare us. Life can and should go on as it was.” “I am concerned about the emotional and mental well-being of kids being sent to school with so many restrictions.” Safe distance is important, but children should try and return to a normal learning environment. “I would like safe distancing in class, maybe dividers or 6 ft apart.” “The children should wash their hands frequently and wear masks to keep everyone safe.” “I am afraid my child will be to impatient to wear a mask all day.” “The school might have to take some temperatures.” “I am afraid of having my child exposed or having my family exposed to the virus.” “You guys are awesome, I trust what you will do.” (This phrase was repeated many times.)

Teacher Voices

Teachers have overwhelmingly said they would like to have a regular start to the school year, however it is tempered with caution about COVID19. They agree that we need to have PPE, and we need to practice proper social distancing. There is deep concern among the teachers about how PPE and social distancing will harm our relational teaching practices.

All of the teachers feel like they have come a great distance with technology and plan to implement it more thoroughly in their teaching and learning. The teachers have discussed their why they teach and are working on their how to teach differently next year. Additionally, the teachers are looking more intently at standards-based learning and grading practices as well as differentiated instruction for the fall.

Bus Driver Voices

The bus drivers would like to have hand sanitizer available when kids get on the bus. Also, some have said they would like to wear a face shield. “Kids need to see us smile at them. Plus, they need to be able to clearly understand what we are saying.” The suggestion has been given that the morning run from Mercer will be dropped off early so that that bus can then go pick up the town kids. The suggestion has also been made that we need to have a second route in the afternoon for the town kids. Finally, a second Prosser bus has been suggested so there can be some social distancing and because, unlike other routes where kids slowly get on, these kids are on for the entire time. The bus drivers are worried kids will get cold in the late fall and winter if they have to keep windows open. “What a mess! We can only do our best!”

Maintenance and Custodial Voices

The maintenance and custodial staff are concerned about PPE, but are willing to do whatever it takes. Both employees expressed the need for further training in cleaning regimens to align with requirements set by DOH to minimize the risk of possible transmission of COVID-19.

Food Service Voices

The food service staff is concerned about how they can make and serve meals under the new regulations. All three employees expressed the need for further training in cleaning and food handling to align with requirements set by DOH to minimize the risk of possible transmission of COVID-19.

School Nurse Voice

Our school nurse has very strongly said she wants us to follow Department of Health standards and guidelines, but that she believes the use of PPE can be tempered with common sense.

Special Education and Speech Therapist Voices

The biggest concern is that we have enough space and time with our kids. As long as we have the proper safety procedures in place, “I’m good.”

Professional Development for Teachers

Standards Based Grading and Grading Policies



Teachers have been working on professional development over the summer. Each one has watched a series of videos by Rick Wormeli on Standards Based Practices and Standards Based Grading as well as a variety of other videos. They have also read articles which include, *Standards Based Grading, What to Know*, by Lauren Davis and *What does the research say about standards---based grading? A research primer* by **Matt Townsley & Tom Buckmiller, Ph.D.** The teachers will or have had small group meetings to discuss what this looks like in their grade bans; K-4; 5-8.

Learning Standards through Thematic Units and Project Based Learning

The staff worked with ESD 123 to develop thematic units through the social studies standards. These standards incorporate many ELA standards and helps students navigate learning with a topic they can practice standards around. Grades 5-8 teachers are expanding the work around Day of the Notables and National History Day work. Additionally, the STEAM Fair Project Based Learning opportunity will continue to be one of the focused academic projects of the school year.



How to Implement Quality Distance Learning



distance education

Teachers have worked in groups to plan where and how to meet the needs of learners. Many have taken courses from Jeff Ulteck, outside of their contracted hours, regarding quality distance learning and how to go about it. Paterson is offering ten hours of training to teachers in August to move their skills forward. Finally, the ESD123 is offering additional trainings that will be available to the Paterson teaching staff.

Working with OSPI and the Department of Health

Staff and Student Screening Plans

Paterson will be asking staff to attest daily to their physical health before coming to school. Paterson will also ask parents to attest to the health of their children daily. Paterson health room workers will screen staff who have not complied and students who have not been screened by their families.

Additionally, the district is following state and local health authorities' recommendations for procedures to address students or staff who become ill at school, communicate with families about potential or verified exposure to COVID-19 and when to quarantine students and staff in response to a potential or verified exposure to COVID-19. Vanessa McCollum at Benton-Franklin Department of Health is our contact person and Dr. Amy Person is our Benton County Health Officer.

- As we predict Benton County to still be in phase 1.5 in late August, we will be working the Benton-Franklin Health Department for approval to reopen as planned.

Our local health Officer is Kathy Marra, our school nurse.

All individuals inside schools—staff, students, parents, other visitors—will be required to wear cloth face coverings and/or face shields as directed by DOH and Washington Department of Labor & Industries. Those unable or unwilling to wear any face covering inside schools will be provided other alternatives to work (if viable and legal) or to learning outside of the school building.

Handwashing and Hygiene

Paterson School will provide hygiene lessons for all students on the first day of classes and will continue instruction for three weeks or longer as necessary. These lessons will focus on handwashing and how to properly wear facemasks. Staff will have training in proper use of PPE and good hygiene during the return to school staff meetings. Students and staff will be required to wash their hands before and after every recess or break, after they use a facial tissue, and after they use the bathroom.

School Cleaning Standards

The Paterson School custodian has augmented her cleaning regimens to align with requirements set by DOH to minimize the risk of possible transmission of COVID-19. Paterson has ordered a large supply of cleaning supplies. (See appendix A).

Facilities Preparations

As stated above, the Paterson School custodian has augmented her cleaning regimens to align with requirements set by DOH to minimize the risk of possible transmission of COVID-19. Her hours have been adjusted to enable more time for wiping down surfaces during the school day.

All cloth fabric upholstered chairs have been removed (placed in storage) and replaced with chairs that are easily wiped clean. The nurse's station, which has only one relief bed, has expanded capacity for relief beds by purchasing cots and reserving portions of rooms adjacent to the school office for

students to place overflow of students. Additional blankets and pillows have been ordered through our laundry service.

Outdoor learning environments have been noted and will be available for teachers to use during good weather. The reception area of the school and the staff lounge have had most of the seating removed so that there is six feet of distance between seats.

Touchless Purell hand sanitizer units were already in place in every classroom, the staff room, the kitchen, the cafeteria area, and the foyer to the school. Refills for these dispensers are ordered and back ordered. Until they arrive, hand pumps for sanitizer will be available in every room.

High Risk Employees and Students

High Risk Employees: An email and a letter were sent to all employees to make them aware of the CDC definition of high-risk employees. The District has asked them to contact either Kathy Marra or Monica Burnett so we can accommodate their needs in our work environment. As such, Paterson School District administration has been working with high risk employees to address accommodations consistent with both the L&I requirements and the Governor's proclamation regarding high risk employees.

High Risk Students: An email and a letter were sent to all families in their welcome back letter to make them aware of the CDC definition of high-risk populations. The District has asked them to contact either Kathy Marra or Monica Burnett so we can accommodate their needs in our school environment. As such, Paterson School District administration has been working with high risk students to address accommodations consistent with both the L&I requirements and the Governor's proclamation regarding high risk populations.

Reducing Transmission

All members of Paterson School District will keep a physical distance of six feet whenever possible. Student desks and teacher spaces all have a minimum of 36 square feet. By the very nature of Paterson's size, all students are grouped by grade level. We have one class per grade level. This makes it very easy to keep students grouped. If students need to share spaces during the day, the space will be cleaned between each group using it. Hallway traffic will also be significantly reduced. Every classroom has a door that opens to the outside. Students will use these doors to go out for breaks. They will also only walk east in the hallway and west bound students will walk outside with their teacher. Teachers are planning to hold class outside when weather permits and meal service will also be outdoors weather permitting. Details follow in this report.

Paterson COVID Capacity and Physical Space Limitations

Physical distancing requirements will require extensive adjustments to all aspects of how Paterson School District operates including busing, food service, classroom configurations, passing in the hallway and in ways we may not have yet conceived. The staff have looked at many of these issues and address them below.

Busing

The issues of social distancing on bus routes has been addressed by Department of Health and OSPI. Paterson will be following their guidelines. According to the most recent guidance from OSPI, who is informed by DOH and L&I, students, chaperones, and drivers must wear face coverings on the buses. The guidelines also state that because many routes are short in duration and the transportation is essential for students in order to access their education, maximum air flow (open windows), proper hand hygiene, and frequent cleaning and disinfecting of the buses are required.

Paterson is very open to parents bringing their children to school if they do not want to put them on a bus. Local students, those on Prior Avenue on the westside of Highway 221 are encouraged to walk to school. Students may be required to sit in family units while on the bus so close contact is only made with those they share a home with. Bus routes and times are being reconfigured so a smaller number of students will be on each route.

If parents choose to bring their children to school, they will walk their child to the front of the building and have the student enter by themselves if possible. Students who will be picked up in the afternoon will remain in the building until the busses leave and then will be escorted to their family vehicle.

Classroom Configuration (physical spaces)

Measurements of each classroom's useable space for distancing were taken. Useable space for distancing is defined as space that can hold a student desk and be an effective learning space because the student will have a good view of the teacher and the board or screen and the student will have a personal 36 square feet. The measurements and classroom maps are below. The number of people in a room has a maximum number, that includes any para helpers and teachers in the classroom.

Paterson School has the capacity for two-hundred sixteen (216) people in classrooms. We have one-hundred thirty-four (134) students planning on attending Paterson School in Fall of 2020. We also have ten teachers, two paraprofessionals, and one intervention specialist for a total of thirteen (13) staff who will be in classrooms.

NOTES

- 1. SEE SHEET FOR PLANS & WALL DETAILS REFER TO SHEET FOR ALL WALLS.
- 2. EXISTING WALL CONSTRUCTION TO CONFORM TO THE REQUIREMENTS OF IBC.
- 3. NEW WALL CONSTRUCTION SHALL CONFORM TO THE REQUIREMENTS OF IBC.

LIST OF SPECIAL INSPECTIONS

- 1. FOUNDATION - INSPECTION AND TESTS PER NEW CONSTRUCTION IBC 1801.2.1.1.
- 2. FOUNDATION - INSPECTION OF EXISTING FOUNDATION PER NEW CONSTRUCTION IBC 1801.2.1.1.
- 3. FOUNDATION - INSPECTION OF EXISTING FOUNDATION PER NEW CONSTRUCTION IBC 1801.2.1.1.
- 4. FOUNDATION - INSPECTION OF EXISTING FOUNDATION PER NEW CONSTRUCTION IBC 1801.2.1.1.
- 5. FOUNDATION - INSPECTION OF EXISTING FOUNDATION PER NEW CONSTRUCTION IBC 1801.2.1.1.
- 6. FOUNDATION - INSPECTION OF EXISTING FOUNDATION PER NEW CONSTRUCTION IBC 1801.2.1.1.
- 7. FOUNDATION - INSPECTION OF EXISTING FOUNDATION PER NEW CONSTRUCTION IBC 1801.2.1.1.
- 8. FOUNDATION - INSPECTION OF EXISTING FOUNDATION PER NEW CONSTRUCTION IBC 1801.2.1.1.
- 9. FOUNDATION - INSPECTION OF EXISTING FOUNDATION PER NEW CONSTRUCTION IBC 1801.2.1.1.
- 10. FOUNDATION - INSPECTION OF EXISTING FOUNDATION PER NEW CONSTRUCTION IBC 1801.2.1.1.

LIST OF DEFERRED SUBMITTALS

- 1. NEW WALL SYSTEM
- 2. NEW WALL SYSTEM

BUILDING CODE ANALYSIS

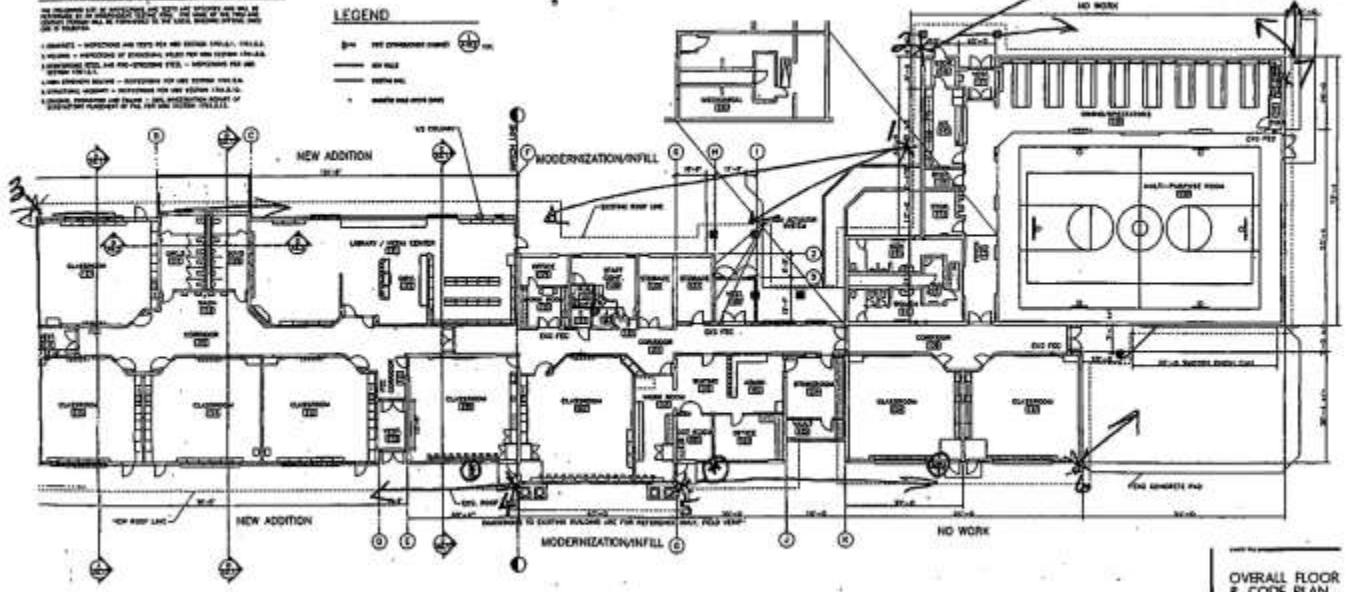
SEE COVER SHEET FOR BUILDING ANALYSIS AND BUILDING TYPE.

PARKING REQUIREMENT

- SHOULD 1 SPACE PER 200 GROSS SQ. FT.
- SHOULD 1 SPACE PER 200 GROSS SQ. FT.
- SHOULD 1 SPACE PER 200 GROSS SQ. FT.
- SHOULD 1 SPACE PER 200 GROSS SQ. FT.

LEGEND

- NEW CONSTRUCTION
- EXISTING WALL
- EXISTING WALL
- EXISTING WALL



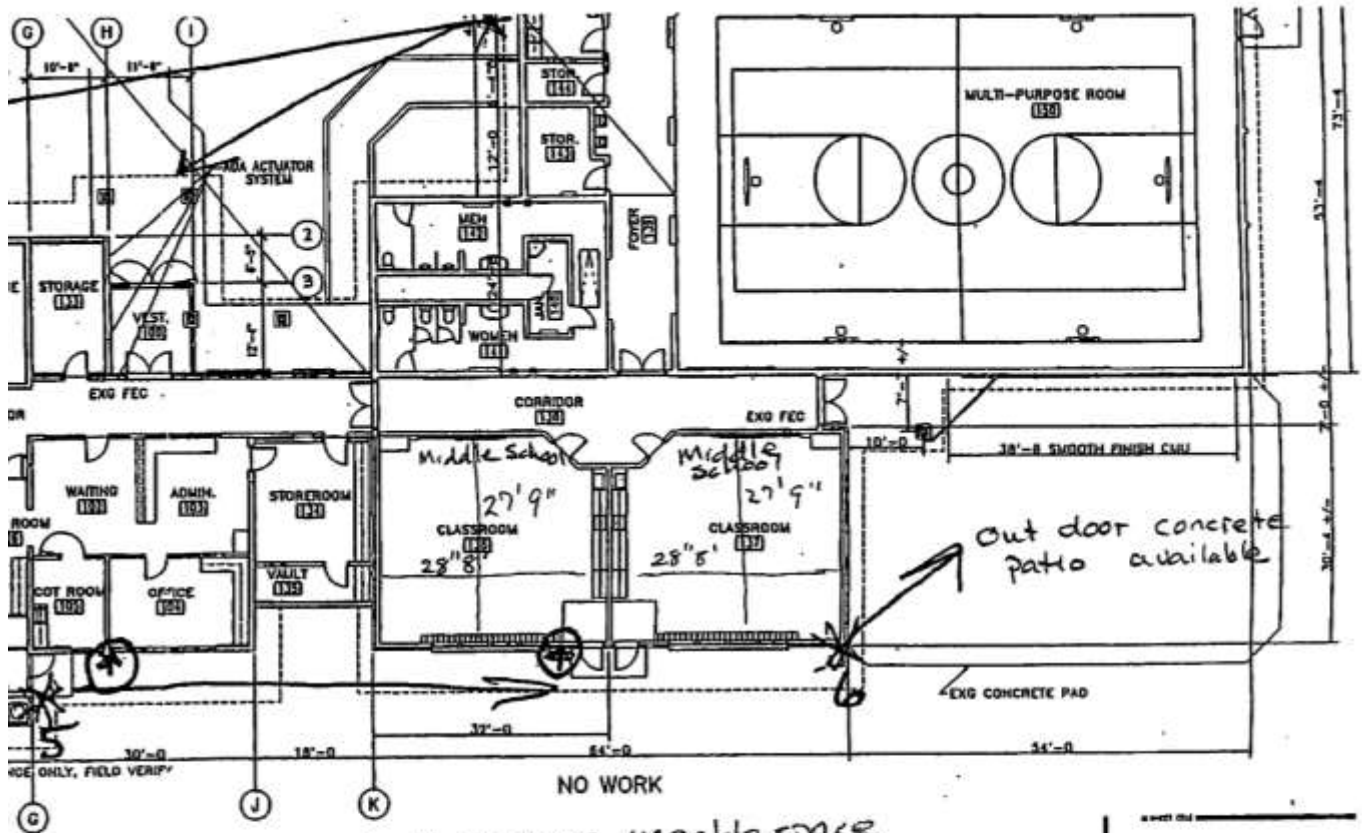
Security System

OVERALL FLOOR & CODE PLAN
 SCALE: 1/8" = 1'-0"



OVERALL FLOOR & CODE PLAN

NO. 1	1-11-11
NO. 2	1-11-11
NO. 3	1-11-11
NO. 4	1-11-11
NO. 5	1-11-11
NO. 6	1-11-11
NO. 7	1-11-11
NO. 8	1-11-11
NO. 9	1-11-11
NO. 10	1-11-11



2 middle school classrooms useable space
 $27'9" \times 28'8" = 1795.60 \text{ sqft of useable space}$
22 people max

OVERALL FLOOR & CODE PLAN

SCALE 3/32" = 1'-0"



All classrooms have two exits one
 to hall other to exterior.

- 2" = .17
- 4" = .33
- 5" = .42
- 6" = .50
- 8" = .67
- 9" = .75

OVERALL FLOOR & CODE PLAN

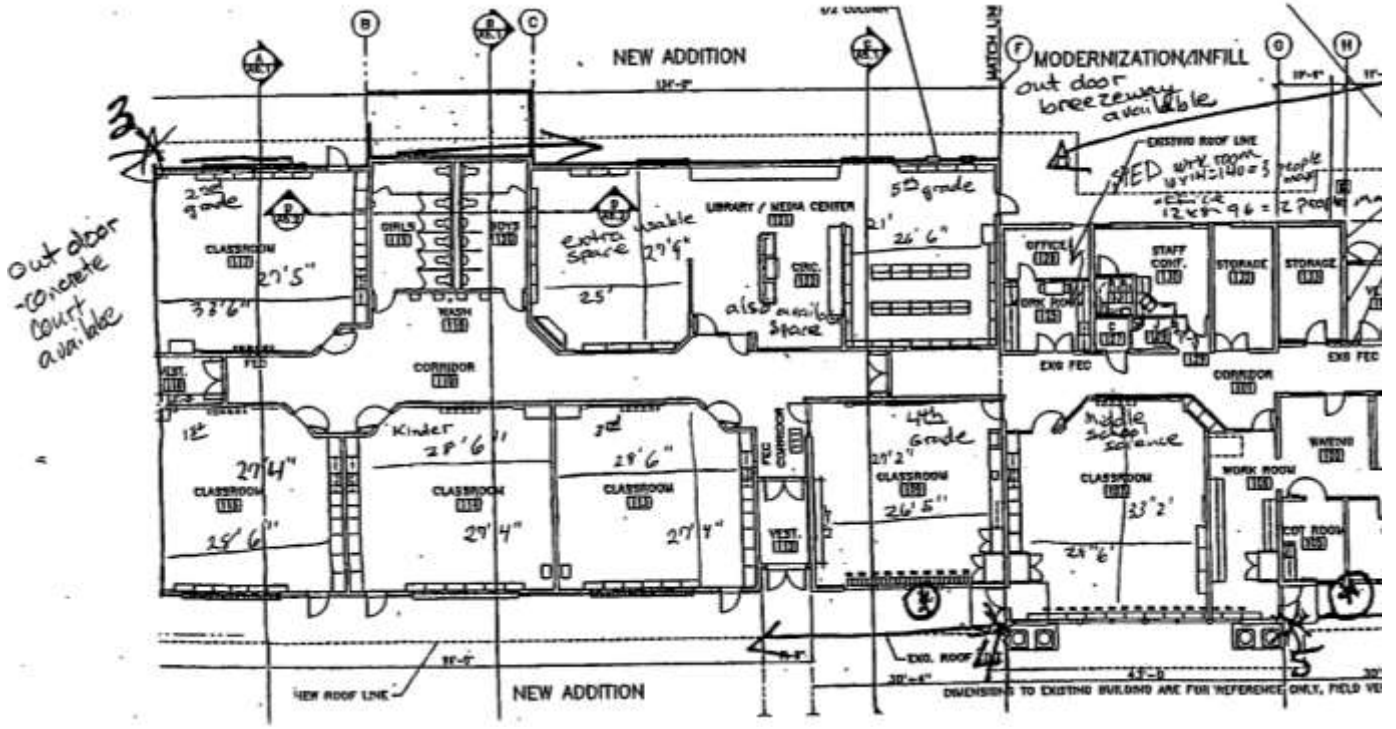
03004 5-21-03
 C:\CH\03004\03004-PLAN
 DWG: 03
 Date:
 P:
 Scale:



2" = .17
 4" = .33
 5" = .42
 6" = .50
 8" = .67
 9" = .75

Kindergarten
 1st
 2nd
 3rd
 4th
 5th
 Extra Space
 Middle School Science
 Special Education Space
 Speech Therapy move to portion of extra space

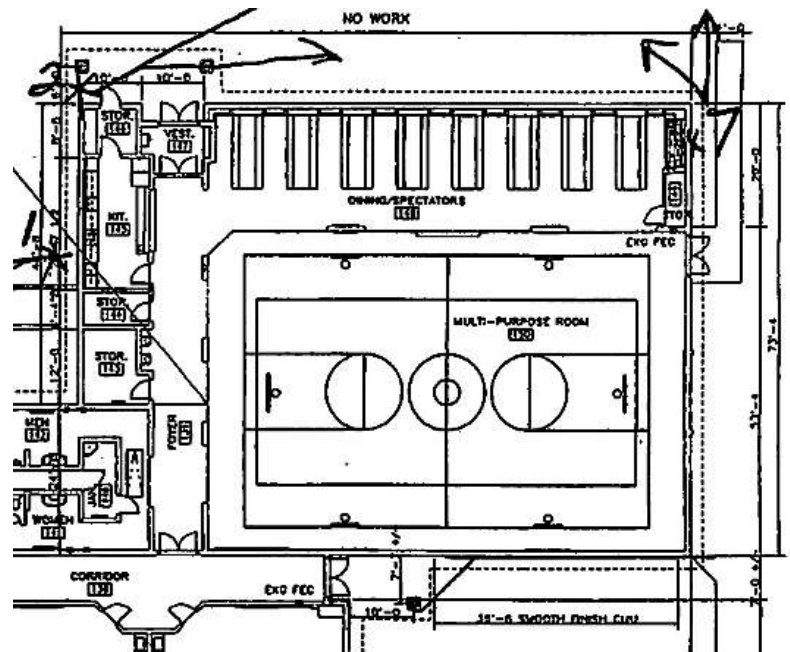
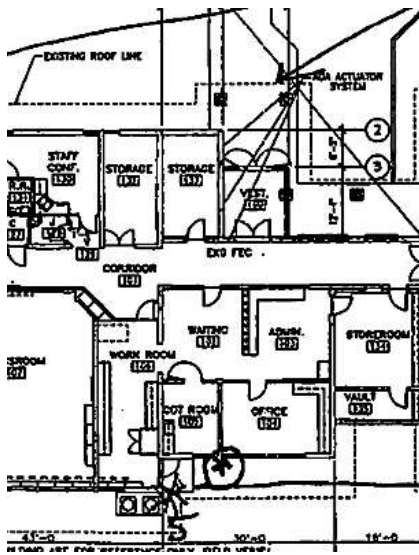
$27'4" \times 28'6" = 778.92 \text{ sq. ft} = 22 \text{ people max}$
 $27'4" \times 28'6" = 778.92 \text{ sq. ft} = 22 \text{ people max}$
 $27'5" \times 33'6" = 918.57 \text{ sq. ft} = 25 \text{ people max}$
 $27'4" \times 28'6" = 778.92 \text{ sq. ft} = 22 \text{ people max}$
 $27'2" \times 26'5" = 721.53 \text{ sq. ft} = 20 \text{ people max}$
 $21' \times 26'6" = 556.5 \text{ sq. ft} = 15 \text{ people max}$
 $27'9" \times 26'5" = 717.83 \text{ sq. ft} = 20 \text{ people max}$
 $33'2" \times 28'6" = 945.35 \text{ sq. ft} = 26 \text{ people max}$
 $10 \times 14 = 140 \text{ sq. ft} + 12 \times 8 = 96 \text{ sq. ft} = 5 \text{ people max}$



Additional Physical Space Configurations

Our front office space will have two secretaries, a part-time nurse, and the principal/superintendent. Each of these workers have ample space for distancing. The principal/superintendent has her own office, the nurse has her own office, and the secretaries have a space behind the reception counter that is one-hundred fort-four (144) square feet.

The kitchen's usable space is one-hundred fifty (150) square feet. We have two food service workers in the kitchen at a time. That is ample room however, the nature of the work required them to pass through each other's space. The district has adjusted for portable work space so the ladies can cup fruit, or prepare vegetables in the adjacent student table space.



School Operations

Hybrid Model

The definition of a hybrid model takes two completely different models and forming a new one that better serves the Paterson student body, their families, and the community. Early on in this process, the teachers met to discuss goals and objectives for the fall. These goals and objectives lead the teachers to pursue their professional development from their homes all summer. They guided the teachers through many discussions with colleagues as they planned for the 2020-2021 school year. These goals and objectives, grown from our mission, are where the projected outcomes for Paterson School will land. These goals and objectives are our response to the social, health, and economic event of COVID 19 that plagued our world. They project the outcome we want to bring to fruition for our students. These are listed in full at the beginning of this report and again here to help focus the context of this portion of the reopening plan. So, what is the Paterson hybrid model? It is the conscious effort on the part of the teaching and learning staff to take the best practices Paterson School offered pre-COVID19, blend them with the best technology practices learned during the school closure, and meet the needs of all of our students throughout what this pandemic has left to hand us --- and, most importantly for Paterson, to do this while maintaining quality relationships with students and families.

The Paterson hybrid model will require all students to get on Google classroom every day, even while at school. The teachers will set a up a routine with the students so if Paterson School has to move to distance learning quickly again, the students will transition seamlessly. Students will be offered opportunities to expand their learning in areas of their interest. Additionally, families who opt for distance learning, will be able to participate in the classroom through Google Meets and a variety of technology enhancements.

Goals for the 2020-21 school year

- ✓ Make the learning experience exceptional for all Paterson students, families, and staff.
- ✓ Move all Paterson students forward *a minimum* of one year in learning during this COVID19 hybrid year.
- ✓ Build a plan that provides flexibility, adaptability and options for our students, families, and staff.
- ✓ Keep our students, families, and staff and community safe and healthy.

Objective: Establish an exceptional learning experience for all Paterson School students using the best aspects of today's educational technology merged with the time-tested best practices of yesterday to develop a modern 21st Century hybrid learning model in our school setting.

We will:

- be courageous in our thinking -- beyond the norm-- and acting -- beyond the norm Paterson will offer traditional face to face learning coupled with live stream or videoed lessons for students who are unable to attend in person.
- prioritize human interaction and personal relationships. Every child, every family, and every staff member will know they are important to our school.
- utilize today's technology to remove barriers and create effectiveness.
- reduce redundancies and inefficiencies in teaching and learning wherever possible.
- prioritize and keep the best aspects of our traditional instructional model as well as the best aspects of the lessons we learned during the closure.
- raise the level of expectations for students. We will ask them to be deep thinkers and to take a stronger sense of ownership in their learning.
- maximize the time spent on the most important aspects of the learning process.

Student Schedules

The official student school day will run from 7:55AM -3:45PM Monday through Thursday with the exception of weeks where the school has a Monday or weekday holiday, then a regular school day will appear on a Friday that week. We have 134 students in our projected enrollment. Well over 95% of those students will arrive at school by bus. The busses will stagger their arrivals and only one bus will be cleared for student exit at a time. This will allow students to enter the building without walking in large groups.

As students arrive, they will go directly to their classrooms. This is different from years past where they went directly to the cafeteria. Classes will go to the cafeteria and have breakfast or have breakfast served to them in their classrooms. K-3 students will eat in the cafeteria/gym area. The 4th and 6-8th grades will eat in their classrooms.

Once the school day begins, students will walk east in the school corridor and west on the outside breezeway whenever passing between rooms. Kindergarten, first, second, third, and fourth grades will have staggered recess times. This will allow for fewer students on the playground at one time. All students exit from their room through the most direct route to the playground and return through the same path. This will limit the number of students using the common entries and exits.

Due to the small student population, 100% of our students will be allowed to attend school face to face 100% of the time, unless of course we flip to distance learning. However, students will also be able to access their education from home if they are self-quarantined or their parents choose for them to not return to campus until a vaccination becomes available.

Student Attendance

In the spring, during Distance Learning 1.0, Paterson had a very high participation rate—over 90%. However, that means some students did not receive the education they deserve. We trained students at that time to be counted as being at school that they had to log on and actively participate. At a minimum they had to answer a daily entry task. The majority of our students did more. We will continue to have students log into Google Classroom daily, even while in the physical classroom, and participate in their day, so when they need to work from home, they will know exactly what to do. We will take daily attendance both of our in-person classroom and any students who might be participating on-line. Again, our size will allow for this to easily happen.

Learning Standards and Grading Policies

Paterson School District has taken advantage of this opportunity to grow and change. COVID19 forced our hand with Google Classroom. Our teachers had it and some used it. Now all teachers have it and all use it proficiently. Likewise, COVID19 has encouraged us to look at our grading policies to align with the teaching of standards.

Our teaching and learning curriculum are aligned with the state standards. You can find the standards we have agreed to prioritize by going to the links provided.

- <http://www.corestandards.org/Math/>
- <http://www.corestandards.org/ELA-Literacy/>
- <https://www.nextgenscience.org/get-to-know>
- https://www.k12.wa.us/sites/default/files/public/socialstudies/standards/OSPI_SocStudies_Standards_2019.pdf
- <https://www.k12.wa.us/student-success/resources-subject-area/world-languages/world-languages-k-12-learning-standards>

Paterson will continue to grade students in K-4 on standards. The fifth through eighth grades will be transitioning to this system. While students will earn their grade based on standards, letter grades will be awarded to students based on their performance to meeting and exceeding standard.

Curriculum and Technology

There will be a 1:1 Chromebook to student ratio. Each student will have a Chromebook assigned to them. Students will be allowed to take them home for academic use only. These will be the devices they will use for any distance learning. All teachers will provide either a curriculum map or a pacing calendar to the administration for the following subjects: ELA, Math, Science, and Social Studies. This will ensure that if face-to-face time is limited, the basic subjects will be covered.

The district has purchased new technology that allows a teacher to film a lesson real-time and upload it to Google classroom for distance learning in the hybrid model.

Special Populations

Our special populations include our special education students, our speech therapy students, our bilingual students, our students who need extra academic assistance through LAP, our migrant students, and the students who need to work from home.

The coordinators for each of these programs have been working with staff to ensure the needs will be fully met. While we are on campus, the programs will run like a traditional program with the added layer of ensuring all students are computer savvy and ready to go virtual. Also, the bilingual coordinator is working with ESD 123 and the superintendent to plan for thematic units in the classroom that will support EL students in the virtual model.

The speech therapy was successful in the spring with virtual therapy and can flip to that model once again. Our special education teacher has suggested if possible, the students with the most need on their IEP be brought to campus during a closure or she will make home visits to work with the students who require the intense work.

The students whose families choose the distance learning option during COVID will have the opportunity to work live with their class through Google Meets or work a-synchratically from home.

PPE for Staff and Students

Paterson is requiring, in accordance with current regulations, that all students and staff wear masks. If a student comes to the bus or school without one, they will be provided one. If a staff member comes to work without the necessary mask, they will also be provided one.

Paterson School District is participating in the EDS112 purchase of PPE. Also, the Richland, WA Church of Jesus Christ of Latter-Day Saints Ward is sewing masks for all of our students. We are also purchasing face shields for students. All staff will be provided with a face shield and masks at the beginning of the school year and additional PPE as necessary.

High Risk Contact Considerations

With students being kept 6 feet apart in the classrooms and in the cafeteria, the biggest concerns for Paterson is recess and transportation.

- Transportation-- Transportation services will have the windows open, students will sit in family units, and bus routes will be altered to provide the best-case scenario for the smallest number of students on the bus at any given time.
- Recess-- All recess times will be staggered. This will allow for students to stay in small groups and limit extended exposure with other students. We have decided to allow kids to play on equipment and share play equipment. We will have students wash hands before going to play and when they return. Additionally, recess time will be only ten minutes of play time and will be more frequent. This will keep exposure to the “under ten-minute rule” that the CDC has been recommending.
- Meals—All meal times will be staggered and students will be physically distant when eating their meals. If at all possible, they will be allowed to eat outside.

Additionally, high touch surfaces will be continuously wiped down each day and bathrooms will be cleaned a minimum of three times each day. Again, all cleaning will be in compliance with the CDC and Department of Health COVID19 standards.

More Transportation Considerations (Drop Off and Pick-Up)

As mentioned earlier in this report, bus routes have been altered to minimize potential risk. Paterson also understands that some parents may choose to transport their children to and from school. We request that when parents drop their child off at school, if possible, they bring him/her no further than the front door each day. This will be to limit outside contact as much as possible. When picking

students up, Paterson is asking parents to wait in their cars and our staff will walk the children safely outside after the busses leave.

Food Service Considerations

Paterson has opened up additional space for students to sit during meals. All students will be physically distanced by six feet. Some classes will eat in their rooms while the teacher reads to them, some classes will eat in the cafeteria at small tables or individual desks so physical distancing of 6 feet can be maintained. Also, markers will be on the floor so students can see the space they need. Weather permitting, they will be allowed to eat outside. Meal times will be staggered. As discussed in “Student Schedules” on page fifteen.

School Calendar

Due to the fact that Paterson has a 180-day waiver in place for the next three years, we are already on a four-day school week. This alone allows us to have three days each week to complete a deep clean of classrooms. OSPI has requested school districts build calendars for the 2020–21 school year that include more flexible days than usual in case they are required to close for short or long periods of time. We believe the four-day calendar will allow for the flexibility needed. We will start August 26 and complete school before Memorial Day. This calendar allows for us to add a week or two at the end of the year, move spring break, or add in a fifth day when necessary. We have scheduled 1070.18 hours of instruction. These hours do not include lunch/recess. This gives us 70 additional hours in our calendar to reach the 1000 minimum hours for a K-8 elementary school. That allows us 9.5 flexible days. However, it is Paterson School’s intent to fulfill the calendar adopted. (See Appendix B)

School Finances

Paterson has adopted a conservative budget. The budget is based on an estimate of 119 students. However, Paterson has a projected enrollment of 134 students. This will allow us to fill in any short fall from funds that may be pulled back when the legislator comes back in session in January after elections.

Communication Plan

Paterson will communicate with families via phone, e-mail, regular mail and website postings. The district will also be in communication with Vanessa McCollum at Benton-Franklin Department of Health as she is our contact person. Kathy Marra, our school nurse will play a vital role in working and communicating with families. Paterson will host a variety of Back to School preview sessions. They will be held in the morning for parents who are getting off the night shift, afternoon, for parents who find that easiest, and in the evenings for families who need that time. We will host meetings outdoors and in groups no larger than ten people in accordance with Governor Inslee’ declaration. This will give parents a chance to talk with us in person and to get clarification.

Paterson School Cleaning Procedures

The following is adapted from the CDC.

Plan, Prepare, and Respond to Coronavirus Disease 2019 (COVID-19)

This guidance is to help prevent the transmission of COVID-19 within Paterson School.

Intensify cleaning and disinfection efforts in all facilities

- Routinely each day, clean and disinfect surfaces and objects that are frequently touched. This may include cleaning objects/surfaces not ordinarily cleaned daily (e.g., doorknobs, light switches, classroom sink handles, and countertops).
- Clean with the cleaners typically used. Use all cleaning products according to the directions on the label. For disinfection most common EPA-registered household disinfectants should be effective.
- Follow the manufacturer's instructions for all cleaning and disinfection products (e.g., concentration, application method and contact time, etc.).
- Provide EPA-registered disposable wipes to teachers and staff so that commonly used surfaces (e.g., keyboards, desks, remote controls) can be wiped down before use.
- Ensure adequate supplies to support cleaning and disinfection practices.

Clean and disinfect thoroughly

- Close off areas used by the individuals with COVID-19 and wait as long as practical before beginning cleaning and disinfection to minimize potential for exposure to respiratory droplets. Open outside doors and windows to increase air circulation in the area. If possible, wait up to 24 hours before beginning cleaning and disinfection.
- Cleaning staff should clean and disinfect all areas (e.g., offices, bathrooms, and common areas) used by the ill persons, focusing especially on frequently touched surfaces.
- If surfaces are dirty, they should be cleaned using a detergent or soap and water prior to disinfection.

- For disinfection most common EPA-registered household disinfectants should be effective.
 - Additionally, diluted household bleach solutions can be used if appropriate for the surface. Follow manufacturer’s instructions for application and proper ventilation. Check to ensure the product is not past its expiration date. Never mix household bleach with ammonia or any other cleanser. Unexpired household bleach will be effective against coronaviruses when properly diluted. Prepare a bleach solution by mixing:
 - 5 tablespoons (1/3rd cup) bleach per gallon of water or
 - 4 teaspoons bleach per quart of water

The Daily Routine

8:00AM—Use the Electrostatic sprayer to disinfect all busses.

8:30AM—Wipe down the bus cell phones and bring two to the school office for paras to use when on recess duty.

8:40AM—Clean and disinfect the cafeteria area where students ate. Use bleach rags. (In good weather, this could be outside)

9:00AM—walk up and down school hallway wiping down high touch surfaces. All door handles, the wooden rail, the water cooler handles, etc. Go into classrooms and wipe down handles.

10:00AM—15 minute break

10:15AM—Clean middle school bathrooms

11:00AM—Clean elementary bathrooms

11:45AM—Help with Lunch/Recess

12:30PM—Lunch Break

1:00PM— Clean and disinfect the cafeteria area where students ate. Use bleach rags and the electrostatic sprayer. Sweep and mop the floors, vacuum the carpet if students ate in the gym. (In good weather, this could be outside)

(2:00PM—walk up and down school hallway wiping down high touch surfaces. All door handles, the wooden rail, the water cooler handles, etc. Go into classrooms and wipe down handles.) Someone will be appointed to do this every afternoon--- not enough time for Teresa to do this again in the afternoon.

2:30PM— Clean middle school bathrooms

3:00PM—Clean elementary bathrooms

3:30PM—15 minute break

3:45PM— general afterschool cleaning. Empty garbage, vacuum, use the electrostatic disinfectant in each classroom.

5:30PM—Time to go home. It has been a long day!

Appendix B

PATERSON School District No. 50														
2020--2021 Adopted but could be altered due to pandemic														
Student School Calendar														
July 2020					August 2020					September 2020				
M	T	W	Th	F	M	T	W	Th	F	M	T	W	Th	F
		1	2	3	3	4	5	6	7	7(Lib Day)	8	9	10	11(school)
6	7	8	9	10	10	11	12	13	14	14	15	16	17	18
13	14	15	16	17	17	18	19	20	21	21	22	23	24	25
20	21	22	23	24	24(cert srt)	25(all staff)	26(1st day)	27	28	28	29	30		
27	28	29	30	31	31									
					3 DAYS					18 DAYS				
October 2020					November 2020					December 2020				
M	T	W	Th	F	M	T	W	Th	F	M	T	W	Th	F
			1	2	2	3	4	5	6		1	2	3	4
5	6	7	8	9	9	10	11(Veterans)	12	13(school)	7	8	9	10	11
Conf Wee 12	13	14	15	16	16	17	18	19**	20	14	15	16	17	18
19	20	21	22	23	23	24	25	26	27	21	22	23	24	25
26	27	28	29	30	30					28	29-Dec	30	31	
					15 DAYS					11 DAYS in December				
January 2021					February 2021					March 2021				
M	T	W	Th	F	M	T	W	Th	F	M	T	W	Th	F
				1	1	2	3	4	5	1	2	3	4**	5
4	5	6	7	8	8	9	10	11	12	8	9	10	11	12
11	12	13	14	15	15(Pres.)	16	17	18	19(school)	15	16	17	18	19
18(MLK)	19	20	21	22 (school)	22	23	24	25	26	22	23	24	25(Conf)	26(Conf)
25	26	27	28	29						29(Conf)	30(Conf)	31		
					16 DAYS					19 DAYS				
April 2021					May 2021					June 2021				
M	T	W	Th	F	M	T	W	Th	F	M	T	W	Th	F
			1	2	3	4	5	6	7		1	2	3	4
5	6	7	8	9	10	11	12	13	14	7	8	9	10	11
12	13	14	15	16	17	18	19	20	21	14	15	16	17	18
19	20	21	22	23	24	25	26(grad)	27(last)	28(cert last)	21	22	23	24	25
26	27	28	29	30	31(M Day)					18	29	30		
					16 DAYS					0 DAYS				
Aug	24-25	Staff Days	Jan	4	Back to School-Happy New Year									
Aug	26	First Day of Paterson School Year	Jan	Not Set	Adv Fri/Friday									
Aug	27	Open House	Jan	18	No School / MLK Holiday									
Sep	7	No School / Labor Day	Jan	22	School Day on Friday									
Sep	11	School on Friday	Feb	Not Set	Adventure Friday									
Sep	Not Set	Adventure Friday	Feb	15	No School / Presidents' Day									
Oct	Not Set	Adventure Friday	Feb	19	School on Friday									
Oct	16-Dec	Conferences	Mar	4	End of Second Trimester									
Oct	TBD	Staff Prof Development	Mar	Not Set	Adventure Friday									
Nov	Not Set	Adventure Friday	Mar	25,26-29,30	Conferences									
Nov	11	Veterans' Day	Apr	1-Apr	STEAM Fair									
Nov	13	School on Friday	Apr	5th -9th	Spring Break									
Nov	19	End of First Trimester	Apr	Not Set	Adventure Friday									
Nov	25--27	No School / Thanksgiving Holiday	May	3rd - 20th	State Testing Period, grades 3-8 NGSS									
Dec	11	School on Friday	May	26	Graduation									
Dec	17	Holiday Program	May	27	Last Day of School									
Dec	19	No School / Holiday 12/20-01/03	May	28	Last Day for teachers									
			June	1	Last Day for Teachers									

No School Friday

TRIMESTER END DATES**: (1) NOV 19 (2) MAR 4 (3) MAY 27

146 Day Student Year / 7:55 to 3:45 Instructional Day